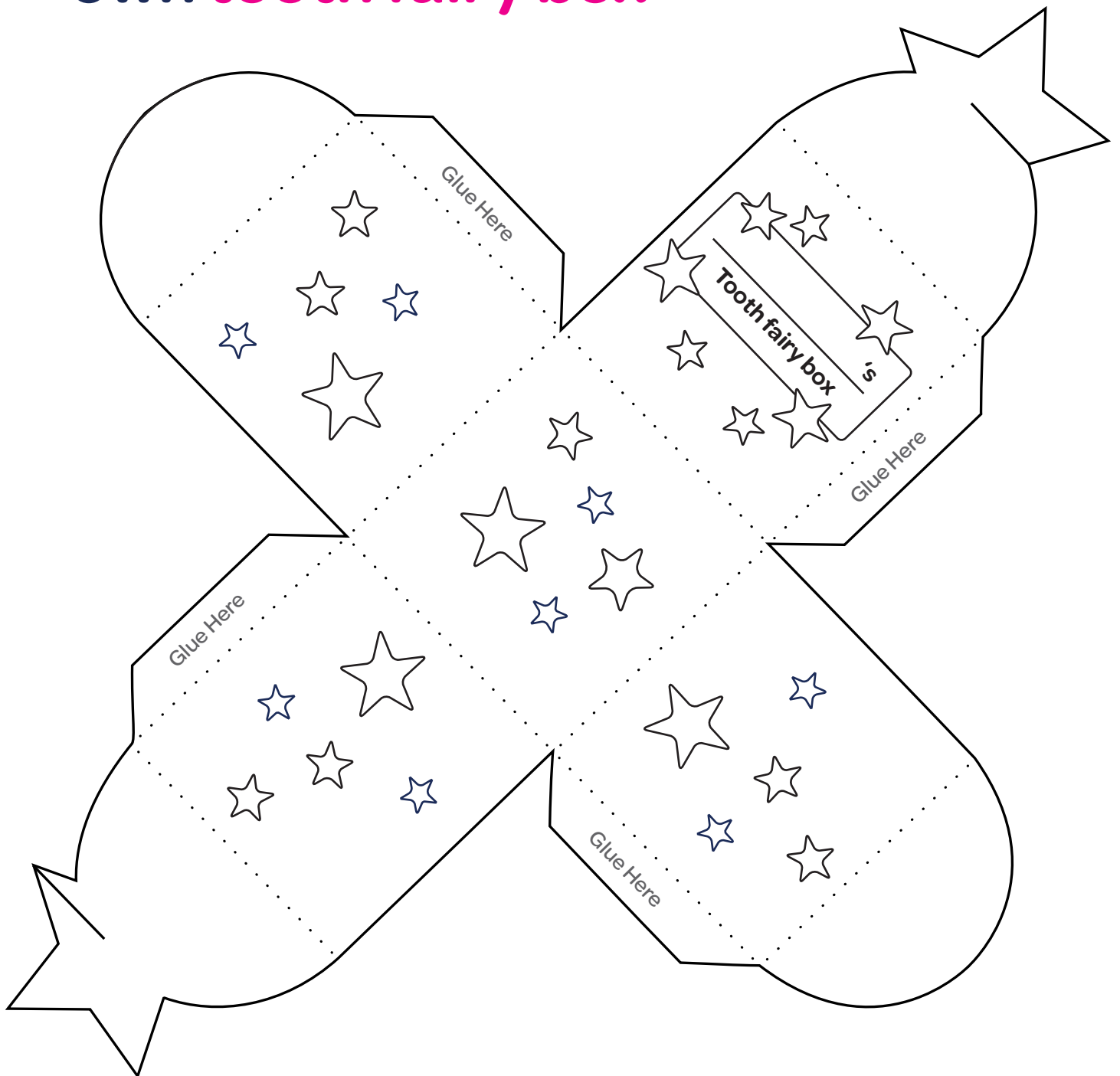


Make your very own tooth fairy box



What you will need:

- Scissors
- Glue
- Coloured pencils or pens

How to make the box:

Step 1

Print off this page.

Step 2

Cut around the solid black line on the outside of the box.

Step 3

Decorate!

Step 4

Fold along the dotted lines.

Step 5

Place glue along the small sides that say 'Glue Here' and fold into a cube shape.

Step 6

Cut the black line on the star shape at the top and slot the star lid in place.